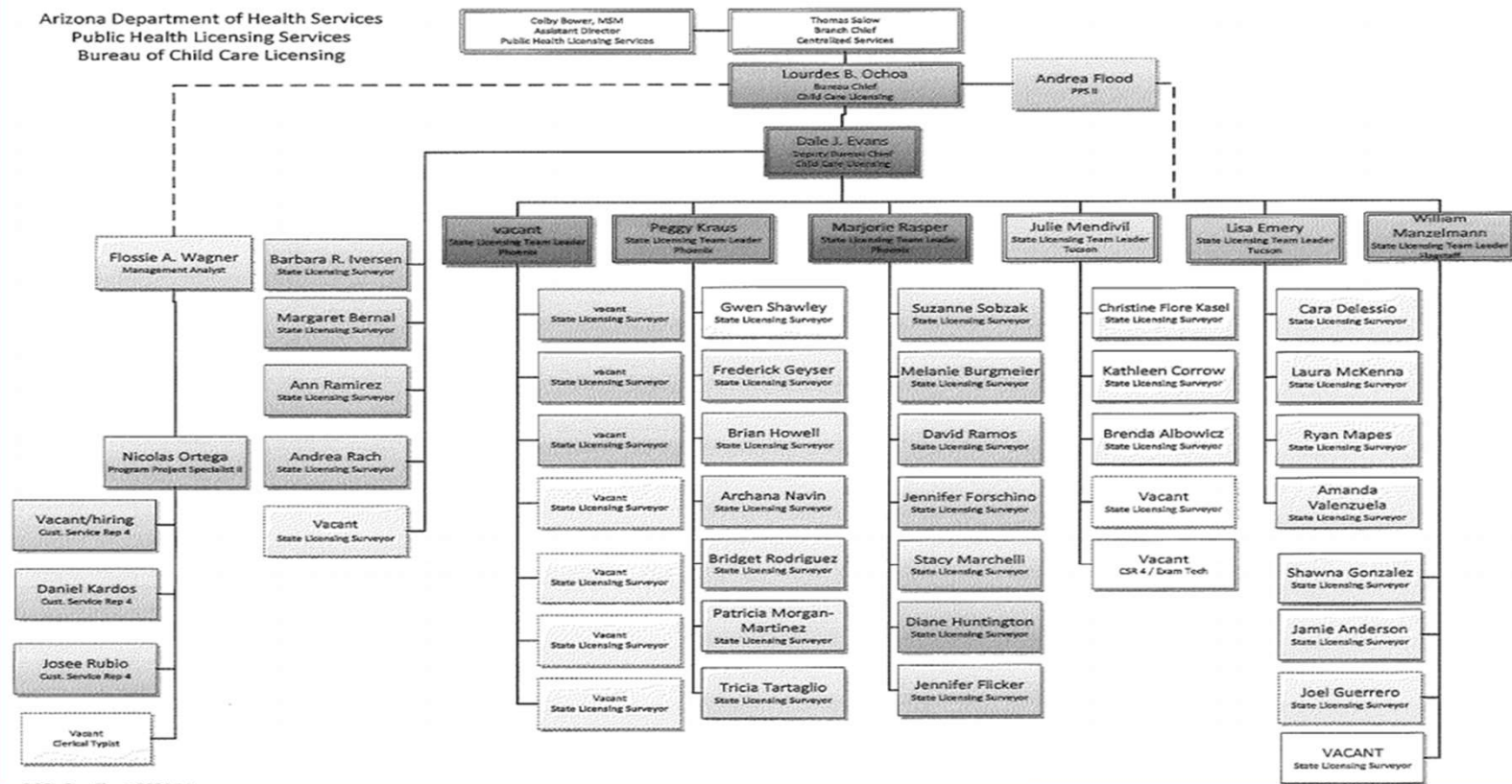




# AZDHS Bureau of Child Care Licensing

Presented by:  
Cara DeLessio

Arizona Department of Health Services  
Public Health Licensing Services  
Bureau of Child Care Licensing



# Licensed Facilities, Public Schools, and Group Homes



- Phoenix 1,605 (51)
- Tucson 641 (15)
- Flagstaff 231 ( 4)

# Child Care Providers by County

	CHILD CARE CENTER	CHILD CARE PUBLIC SCHOOL	CHILD CARE GROUP HOME	TOTAL LICENSES/CAPACITY
<b>APACHE</b>	3 154	11 522		14 676
<b>COCHISE</b>	27 2,042	12 557	10 100	49 2,699
<b>COCONINO</b>	45 2,873	19 1,767		64 4,640
<b>GILA</b>	5 343	6 280	1 10	12 633
<b>GRAHAM</b>	5 298	2 97		7 395
<b>GREENLEE</b>	1 59	2 270		3 329
<b>LA PAZ</b>	2 106	2 45		4 151
<b>MARICOPA</b>	989 120,737	451 66,025	110 1,042	1,550 187,804
<b>MOHAVE</b>	42 2,788	13 896	5 50	60 3,734
<b>NAVAJO</b>	16 832	9 420	1 10	26 1,262
<b>PIMA</b>	240 26,532	94 9,397	85 834	419 36,763
<b>PINAL</b>	56 5,249	20 1,746	6 60	82 7,055
<b>SANTA CRUZ</b>	13 646	2 127	2 20	17 793
<b>YAVAPAI</b>	54 3,467	10 1,012	5 44	69 4,523
<b>YUMA</b>	65 4,723	12 908	24 237	101 5,868
	1,563 170,849	665 84,069	249 2,407	2,477 257,325



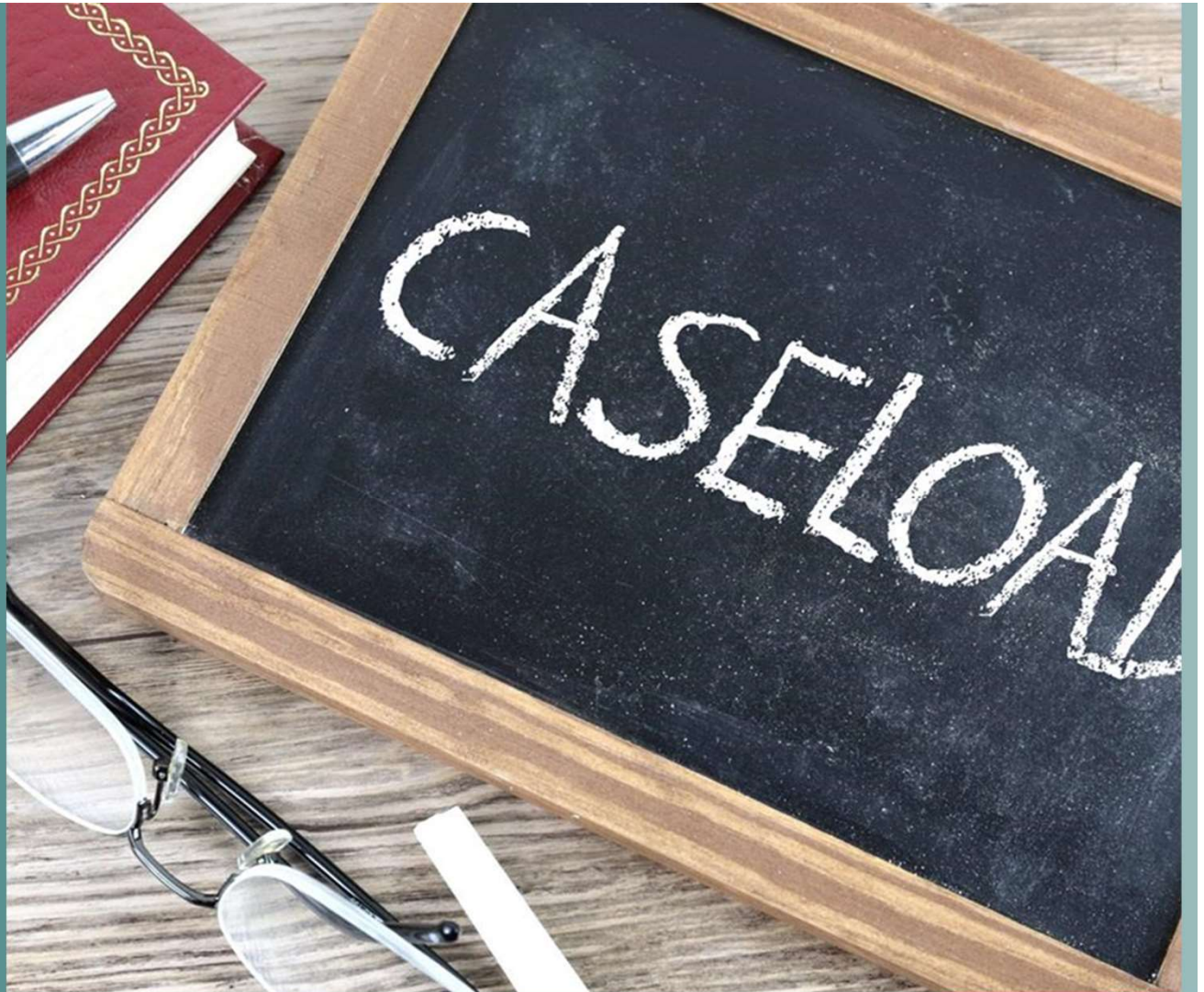
**PHOENIX 17/ 87**

- 2 new  
Surveyors to  
receive  
caseloads 9/21

**TUCSON 7/ 93**

**FLAGSTAFF 3/78**

<https://www.easymapmaker.com/map/3eb30d4abaa05d0c0cdaffb7f9c213f9>



# Current Trends:

LACK OF QUALIFIED  
QUALITY APPLICANTS

STAFF RETENTION

STAFF TO CHILD RATIOS



TEMPORARY CLOSURES

INCREASE IN UNEMPLOYMENT  
INSURANCE RATES FOR  
LICENSEES

INCREASE IN CHILD CARE  
RATES

# COVID PANDEMIC

- Contact local County Health Department
- Post as you would communicable diseases
- DHS has not implemented rule changes, rather refers providers to their local County Health Department for current protocols.





**What are the  
top 10  
deficiencies in  
Child Care  
Facilities?**



R9-5-304.B.1-9	ELLR cards (831)
R9-5-306.B.1	Rosters (571)
R9-5-603.E.1.2	Resilient material under fall zones (546)
R9-5-306.A.1	Rosters (533)
R9-5-603.C.2	Outdoor hazards (476)
R9-5-503.A.1.a.b for diapering (471)	Diaper changing area not seamless, smooth, and kept clear of items not required
R9-5-501.C.5.a-k	Dated lesson plans not posted (436)
R9-5-402.A.1-12	Staff files incomplete (388)
R9-5-503.A.3.4 not tight lid (318)	Soiled diaper and soiled clothes containers are lined and covered with a

# Changes in Licensing



## Slalom

- E-licensing/Applications
- WDOC
- Public Files
- Modifications
- Director changes
- Hours
- Application process

**\*Training**



- **First Things First Central Registry**

**Surveyors can now log onto the Central Registry database and view the staff records prior to the inspection.**

- **DES Group Sizes Checklist**

# FINGERPRINTING





## **ARS 36-883.02.A**

Child care personnel and volunteers are required to have a valid fingerprint clearance card issued pursuant to section 41-1758.07 BEFORE starting employment or volunteer work.



REMINDERS

# **D**isaster **E**vacuation **E**mergency **P**reparedness

**Update annually and submit to BCCL.**



**R9-5-502.A.5.a-e.**

## **Tummy Time**

- Updated charts will be available soon
- Train new staff on protocols
- Supervision protocols
- Floor safety

### **Times**

- 2-3 month old = no more than 15 minutes
- 3-4 month old=no more than 20 minutes
- 5-6 month old=20 minutes







# Sun Safety and Heat Hazards



- Monitor UV Index
- Time of day
- Temperature of equipment
- Drinking water





**Surveyor on Duty 800-615-8555**

**Website:**

**[azdhs.gov/licensing/childcare-facilities](https://azdhs.gov/licensing/childcare-facilities)**