

# Arizona's Early Childhood Fiscal Mapping Project

Ashley Brooks, Research Associate

November 16, 2023



# About Us

Children's Funding Project is a nonprofit social impact organization that helps communities and states expand equitable opportunities for children and youth through strategic public financing. Our hands-on technical assistance and collection of resources, helps advocates, policymakers, public agencies, and funders identify and align existing funding, generate new revenue, and implement strategies to administer funds in ways that maximize their impact.



# ● Today's Agenda



- Introduction to fiscal mapping
- Process of creating the state fiscal map
- Walk through of the Arizona Early Childhood Fiscal Map
- Work at the local level
- Questions?



Photo by Allison Shelley for EDUimages

**CHILDREN'**   
FUNDING PROJECT





## What Is a “Fiscal Map?”

- An analysis of the funding streams that finance child and youth services
- Can include public (federal, state, local) and private (philanthropy) dollars
- A fiscal map answers the question **WHO** invests **HOW MUCH** and in **WHAT?**

Children’s Funding Project is a nonprofit social impact organization that helps communities and states expand equitable opportunities for children and youth through strategic public financing. [childrensfundingproject.org](https://childrensfundingproject.org)

© Children’s Funding Project, 2023

# Why Create a Fiscal Map?

Understand  
current  
investments

Align  
resources  
with goals

Coordinate  
supports and  
services

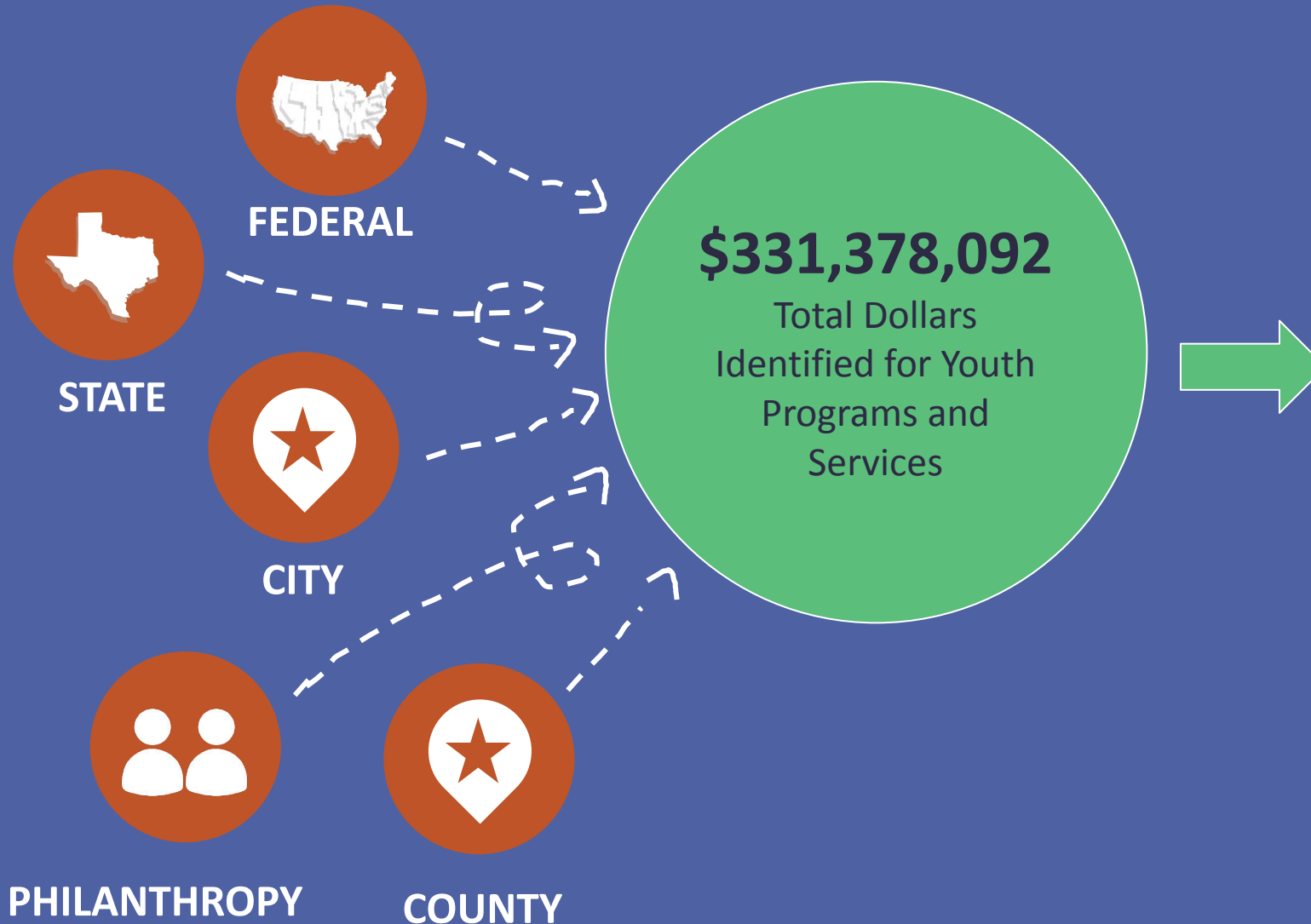
Maximize  
funding  
opportunities

Identify new  
areas for  
attention and  
innovation

## NEW EMERGENT REASONS:

- Determine baseline funding pre-COVID-19
- As we recover, deploy funds more equitably

# WHO Invested *HOW MUCH* and in *WHAT*?



## Programs and Services for Children and Youth in San Antonio and Bexar County

- apprenticeships
- community based juvenile justice services
- cultural education
- dual generation
- early childhood
- employment
- financial education
- foster supports
- gang prevention/ violence prevention
- health education
- health services
- health and wellness
- homeless youth services
- leadership development
- legal support
- mental/behavioral health
- mentoring
- provider outreach training and assistance
- recreational activities
- sexual health education or services
- sports
- street outreach services
- substance abuse

# ● Methodology – State Fiscal Map



- Started with the 2019 fiscal map data
- Identified federal early childhood funding streams that land in Arizona
- Interviews with budget holders to verify and identify funding for early childhood supports and services
  - *AZ Department of Child Safety, AZ Department of Economic Security, AZ Department of Education, AZ Department of Health, AZ Department of Health and Human Services, First Things First.*
- The fiscal map includes Federal, State, First Things First and Federal Relief (COVID-19) Dollars
  - Includes 73 funding streams
- This map does NOT include Medicaid, CHIP, parent contribution, facilities and other capital expenses, and some education funding

# Arizona Early Childhood Fiscal Map

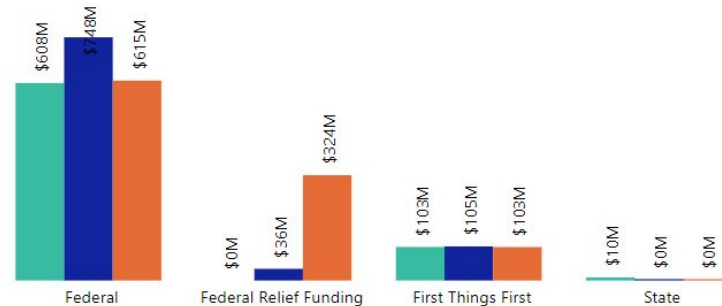


## Arizona Early Childhood Fiscal Map

2019 2020 2021  
\$720M \$889M \$1bn

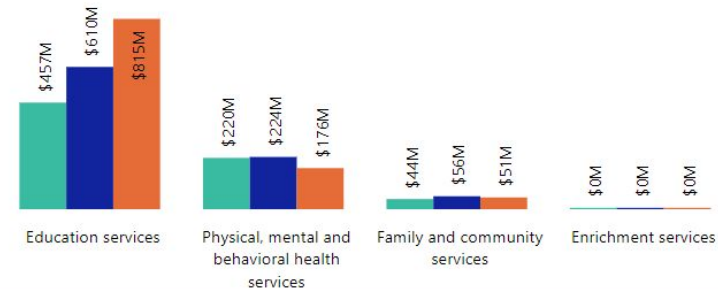
### Funding Level

2019 2020 2021



### Service Category

2019 2020 2021



Funding Stream Name	Funding Stream Description	Original Granting Agency	2019 Amount	2020 Amount	2021 Amount
American Indian and Alaska Native Child Care Development Fund (AI/AN CCDF)	CCDF funding for American Indian/Alaska Native federally recognized tribes. The CCDF is the primary federal program specifically devoted to providing families with child care subsidy and funding supports to states to improve quality.	U.S. Department of Health & Human Services - Administration of Children & Families	\$48,272,217	\$46,154,409	\$50,208,806
American Indian and Alaska Native Child Care Development Fund (AI/AN CCDF) (ARPA)	CCDF funding for American Indian/Alaska Native federally recognized tribes. The CCDF is the primary federal program specifically devoted to providing families with child care subsidy and funding supports to states to improve quality.	U.S. Department of Health & Human Services - Administration of Children & Families			\$156,261,629
American Indian and Alaska Native Child Care Development Fund (AI/AN CCDF) (CARES)	CCDF funding for American Indian/Alaska Native federally recognized tribes. The CCDF is the primary federal program specifically devoted to providing families with child care subsidy and funding supports to states to improve quality.	U.S. Department of Health & Human Services - Administration of Children & Families		\$11,685,534	
American Indian and Alaska Native Child Care Development Fund (AI/AN CCDF) (CRRSA)	CCDF funding for American Indian/Alaska Native federally recognized tribes. The CCDF is the primary federal program specifically devoted to providing families with child care subsidy and	U.S. Department of Health & Human Services - Administration of Children & Families			\$35,811,609

This report analyzes public funding for early childhood services in Arizona from 2019 - 2021. Leaders, advocates and other stakeholders may use the fiscal map to gain a better understanding of the current early childhood funding landscape and to inform strategic decisions within the state. **Notes:** This report does include federal relief funding and does NOT include parent contribution, Medicaid, TANF, SNAP and per pupil education funding. First Things First is recognized as a distinct funding stream, but also a state agency. State and federal fiscal years were not aligned. If the fund is from the state, then the state FY amount was used. Some DCS and DH data was not verified by budget holders.

[Link here](#)



# ● Methodology – Tucson & Phoenix Avondale Fiscal Maps



- Some State budget holders shared data for local maps
  - Arizona Department of Education & First Things First
- Researched local budgets for early childhood focused funding streams
- Local leads identified budget holders to help verify and identify funding for early childhood supports and services
- The fiscal map includes Federal, State, First Things First, County, City, Federal Relief (COVID-19) and Private Dollars
  - Synthesized private data shared from community partners
- This map does NOT include Medicaid, CHIP, parent contribution, facilities and other capital expenses, and some education funding

# Local Early Childhood Fiscal Maps

**Highlight:** In 2021, Pima County invested \$10 million investment into Pima Early Education Program Scholarships (PEEPS). \$7.1 million of that investment landed in Tucson. The towns of Marana and Oro Valley invested an additional \$100,000 of city funds into PEEPS for their towns.

## Tucson Early Childhood Fiscal Map

United Way of Tucson and Southern Arizona



2019  
\$44M

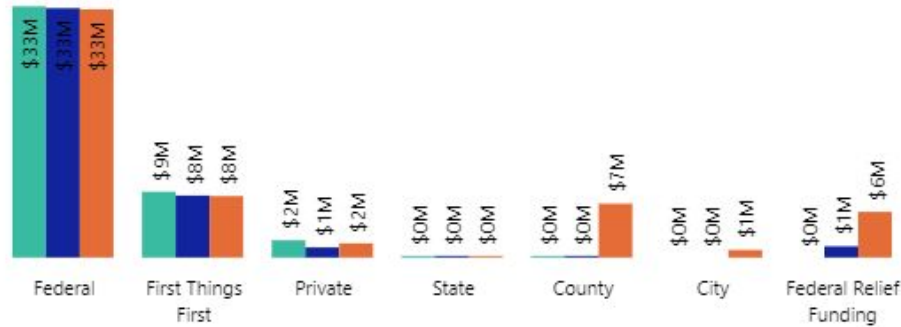
2020  
\$44M

2021  
\$57M

Rectangular Smp

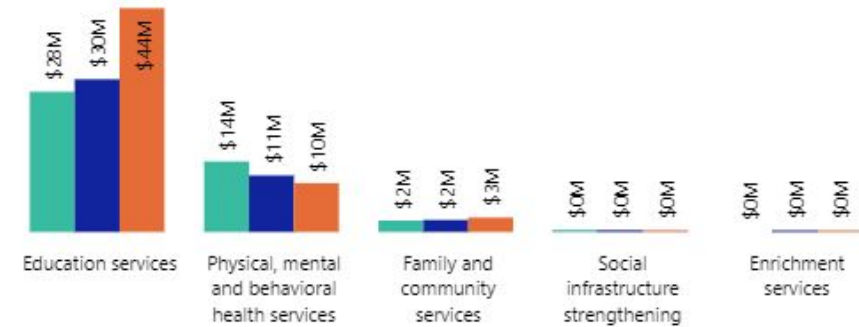
### Funding Level

FY19 FY20 FY21



### Service Category

FY19 FY20 FY21



Funding Stream Name	Funding Stream Description	FY19	FY20	FY21
21st Century Professional Development	Creation of a 'share fair' in which Extension professionals across the state share the programming they have to offer for 21st Century Learning Centers.		\$4,800	\$4,800
Access to High Quality Early Care & Education	These dollars are used to expand access to high quality early care and education.	\$824,641	\$371,180	\$453,461
Advocacy & Awareness	These dollars are used to support advocacy and awareness for early childhood programs and services.	\$88,000	\$40,000	\$8,000
ARPA Head Start Supplemental	ARPA Head Start funds help local Head Start programs build back to fully operational, in-person comprehensive services.	\$0	\$0	\$2,080,964
Child and Adult Care Food Program (CACFP)	The Child and Adult Care Food Program (CACFP) is a federal program that provides reimbursements for nutritious meals and snacks to eligible children and adults who are enrolled for care at participating child care centers, day care homes, and adult day care centers. CACFP also provides reimbursements for meals served to	\$4,745,117	\$3,029,893	\$1,005,764
<b>Total</b>		<b>\$44,203,371</b>	<b>\$44,010,781</b>	<b>\$56,980,073</b>

# What Is a Cost Model?

A cost model is an approach to measuring the *true cost* of implementing and maintaining a service or program.

1

## Aims to Understand

- Costs of providing early education (per child, per classroom, or total)
- How changes in wages or quality impact overall costs
- How geography or program size impacts overall costs

2

## Useful for

- Determining true cost of care against market cost
- Improving child care wages
- Setting appropriate rates

3

## Structural Cost Drivers

- Programmatic requirements and standards
- Ratios and group size
- Geography
- Minimum wage requirements

4

## Operational Cost Drivers

- Wages and benefits
- Rent/utilities
- Food, supplies, and other nonpersonnel costs
- Professional development

## From Questions...

### 1. Current Funding

How much funding supports our goals right now?

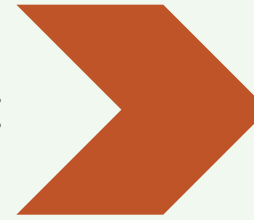
### 2. Needed Funding

How much will it cost to fund our goals in full?

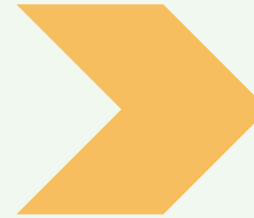
### 3. New Funding

How do we fill the gap between current funding and fully funding our goals?

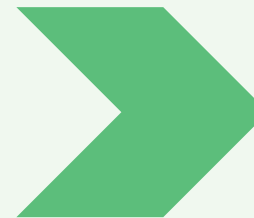
## To Opportunities!



**Fiscal mapping**



**Cost modeling  
and estimation**



**Sourcing additional  
funding**



# Revenue Options and Funding Mechanisms

Where do we find the funding needed to support children and youth?

## Common

City or county general fund

State general fund

Federal grants

Local United Way

Local foundation

National foundation

Individual donors

Corporations

Fee-based services

## Emerging

Dedicated public funding (set aside or new tax)

Community benefit agreements

Individual or business tax credits

Pay for success

Medicaid reimbursements

Library district taxes

Profits from publicly held assets

Reforming tax exemptions

PILOT recapture

In-kind facilities usage

[READ: Innovative Financing to Expand Services So Children Can Thrive](#)

# Thanks!

## Contact Us

Ashley Brooks

[Ashley@childrensfundingproject.org](mailto:Ashley@childrensfundingproject.org)

## About Us

Children's Funding Project is a nonprofit social impact organization that helps communities and states expand equitable opportunities for children and youth through strategic public financing.

## Get In Touch with Us



2101 L St NW  
Suite 800  
Washington, D.C., 20037



(202) 331-4450



[childrensfundingproject.org](https://childrensfundingproject.org)



[@FundOurKids](https://twitter.com/FundOurKids)



[linkedin.com/company/childrens-funding-project/](https://linkedin.com/company/childrens-funding-project/)

