



Head Start Collaboration Office November 2021



System Investment Updates

Investment Updates

Executive Budget & Legislation

\$6.9 Million

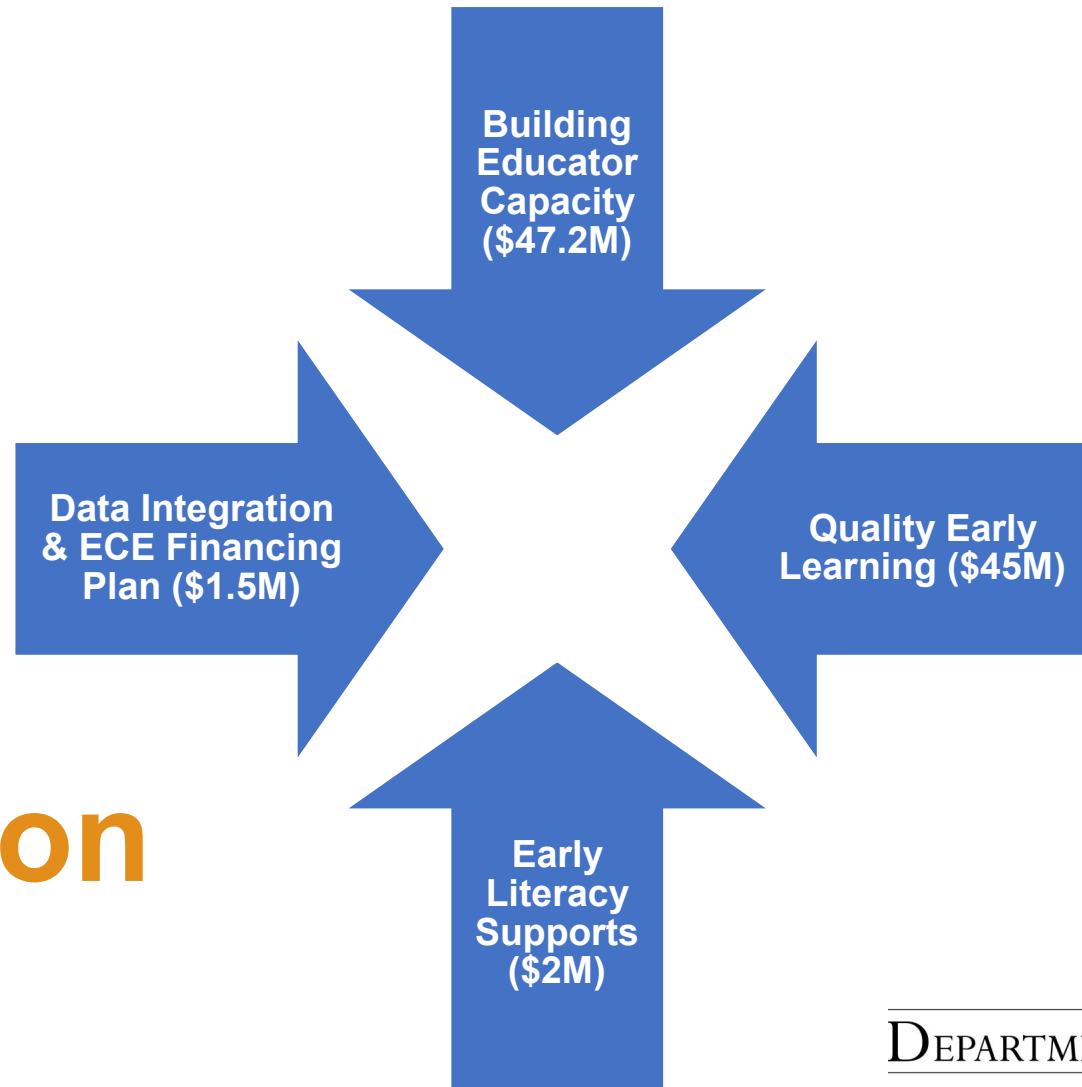
Literacy Coaching
(\$3.1M)

Kindergarten Entry
Evaluation (\$1.5M)

Dyslexia Training
(\$1.3M)

Educator Reading
Exam (\$1.0)

Investment Updates



\$95.7 Million



DEPARTMENT OF ECONOMIC SECURITY
Your Partner For A Stronger Arizona



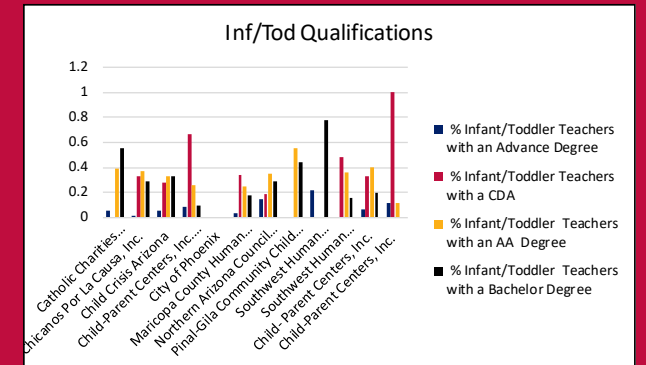
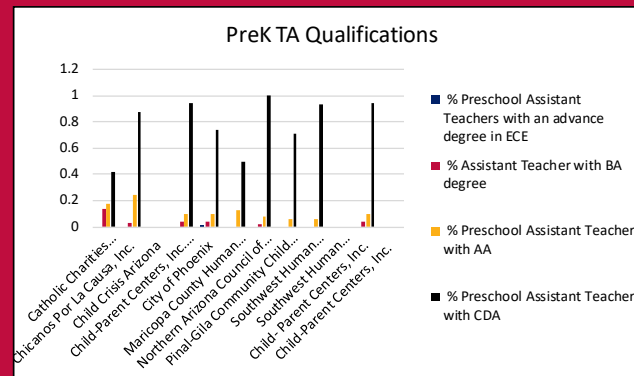
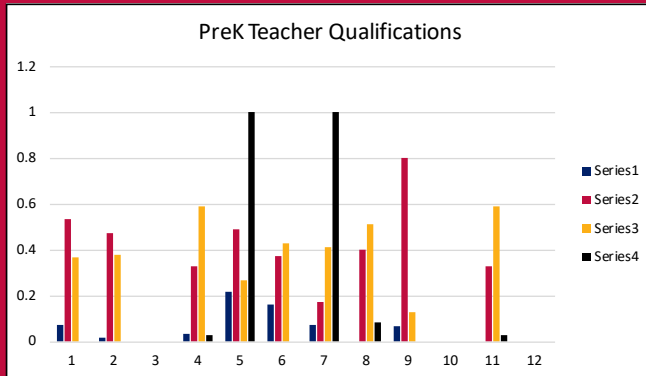
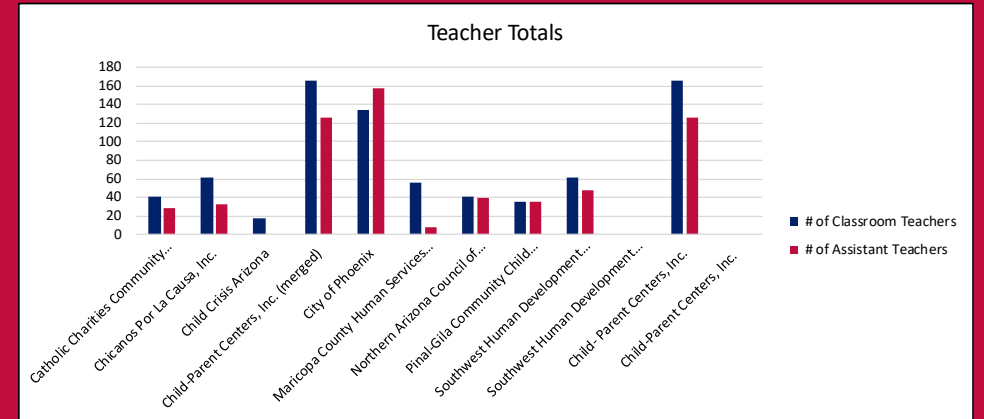
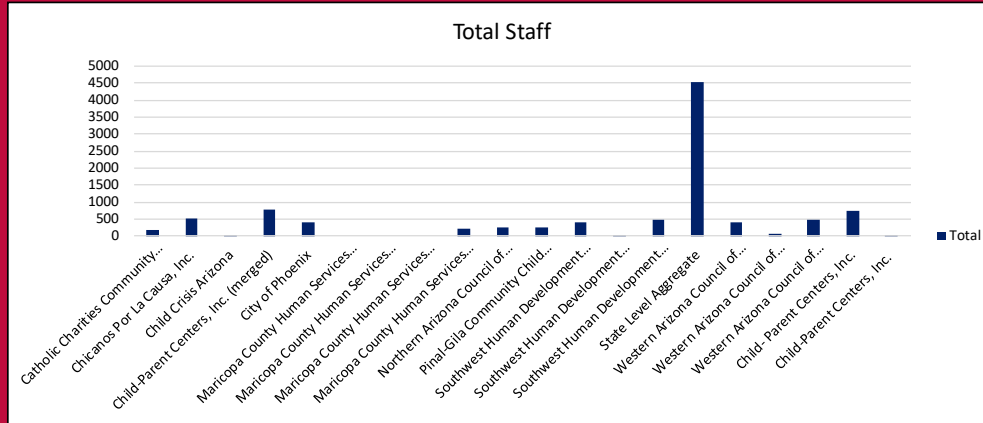
Data Dashboard

HSSCO Data Dashboard



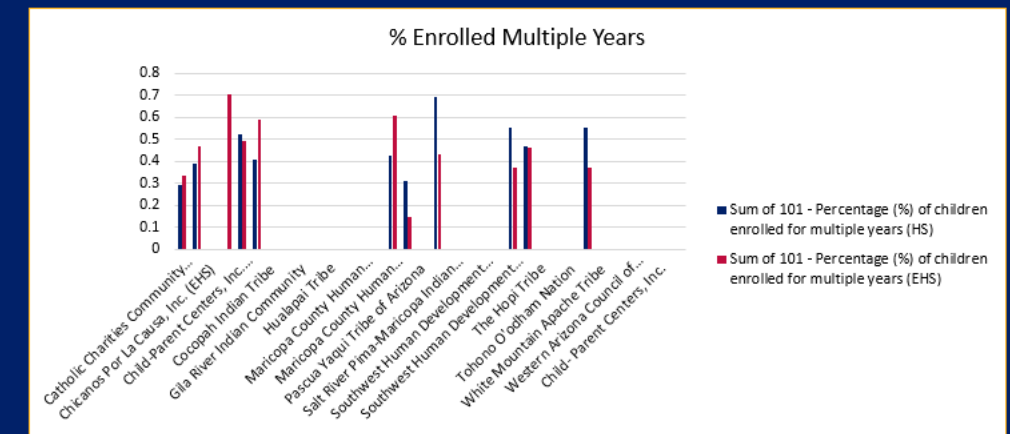
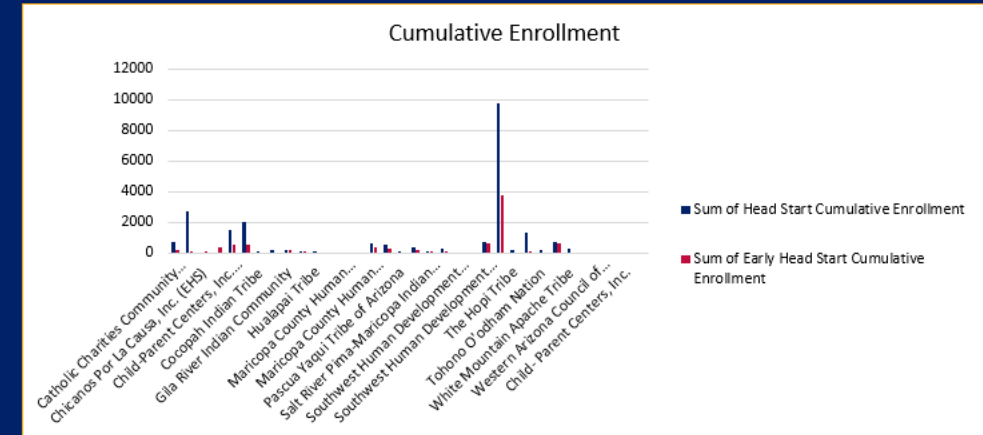
Grantee

- Catholic Charities C...
- Chicanos Por La Cau...
- Child Crisis Arizona
- Child- Parent Cente...
- Child-Parent Cente...
- Child-Parent Cente...
- City of Phoenix
- Maricopa County H...



Data Review

- What surprised you about data?
- What are some programmatic or agency-level opportunities to use this information to inform strategies?
- What are some key challenges that the data highlights?
- Takeaways and next steps?
- What key partners should we engage relative to this data? How?



Ladder Of Inference





Upcoming Professional Learning

December 2021

DECEMBER 2021

Wednesday, Dec 1, 10:00am-2:30pm Connectiveness of Social-Emotional and Language & Literacy with Infants/Toddlers (SEEL) (4-hr)

This session will inspire and guide educators as they focus their work on the promotion of social-emotional and language and literacy skills in young children. Participants will learn strategies to ensure a quality learning environment that fosters nurturing and positive relationships, and a deep understanding of how to provide intentional rich language experiences that address the social emotional needs of the young learner.

Tuesday, Dec 14, 10:00am-12:00pm ACEs Module 2: Toxic Stress and Trauma Informed Care (2-hr)

This session will help participants understand different types of normal and toxic stress and the effects on development and behavior. Participants will also understand the impact of toxic stress using the lens of NEAR science. We will also define trauma and discuss the connections between risky behaviors, coping mechanisms, and unresolved trauma, as well as learn practical strategies for support.