



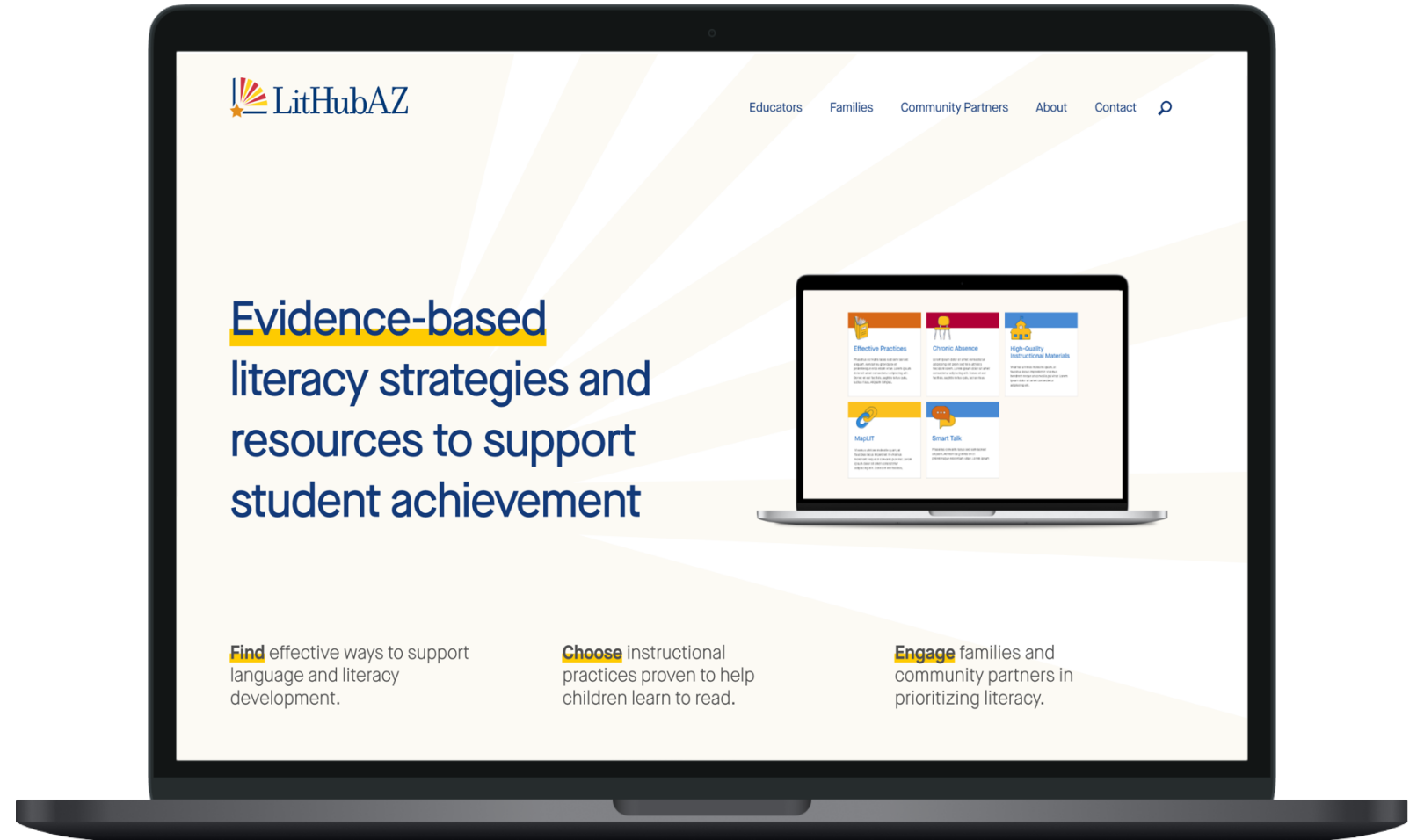
LitHubAZ

Evidence-based literacy strategies and resources

November 2024 | AzSHA

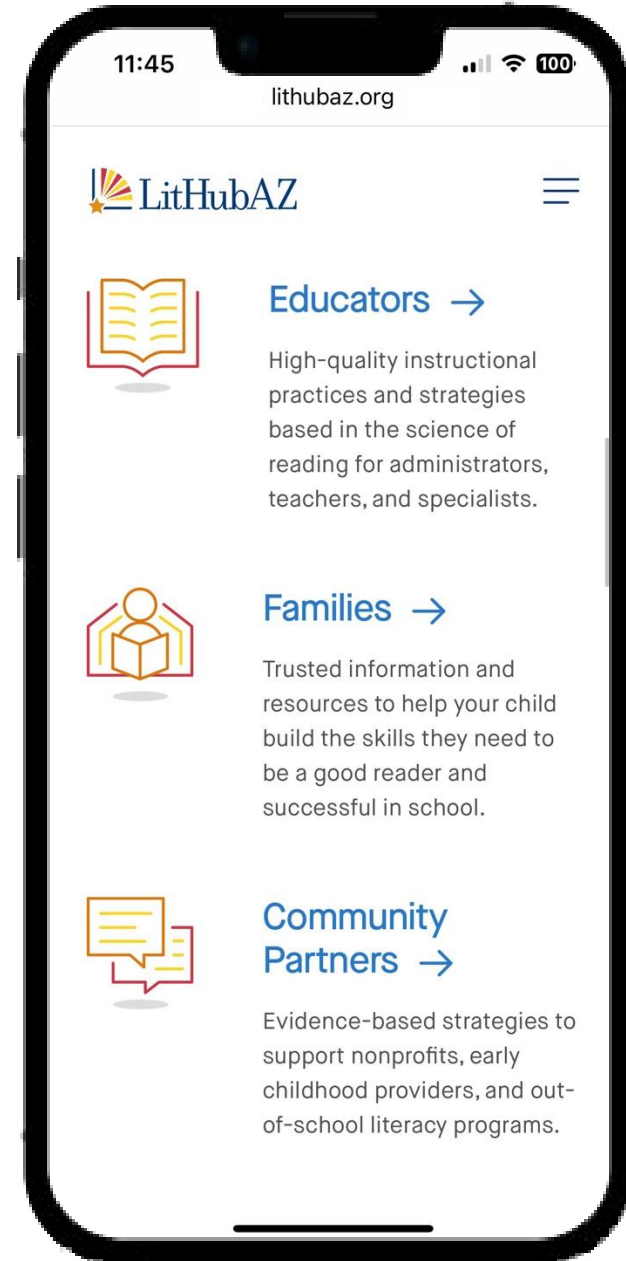
New!

LitHubAZ.org



A free resource for everyone who plays a role in helping Arizona's children learn to read at grade level and be successful in school.

LitHubAZ.org





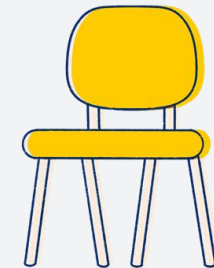
LitHubAZ
For Educators



**Effective
Literacy
Practices**



**High-Quality
Instructional
Materials**



**Arizona
Chronic Absence
Resource Guide**



Effective Literacy Practices

- Literacy Standards
- Strategies, Practices & Tools
- Interventions
- Characteristics of Successful & Struggling Readers
- Key Topics



High-Quality Instructional Materials

- Core Curricula, Interventions & Supplemental Programs
- Filter by:
 - Grade Level
 - Foundational Skill
 - ESSA Evidence Rating



LitHubAZ
For Families



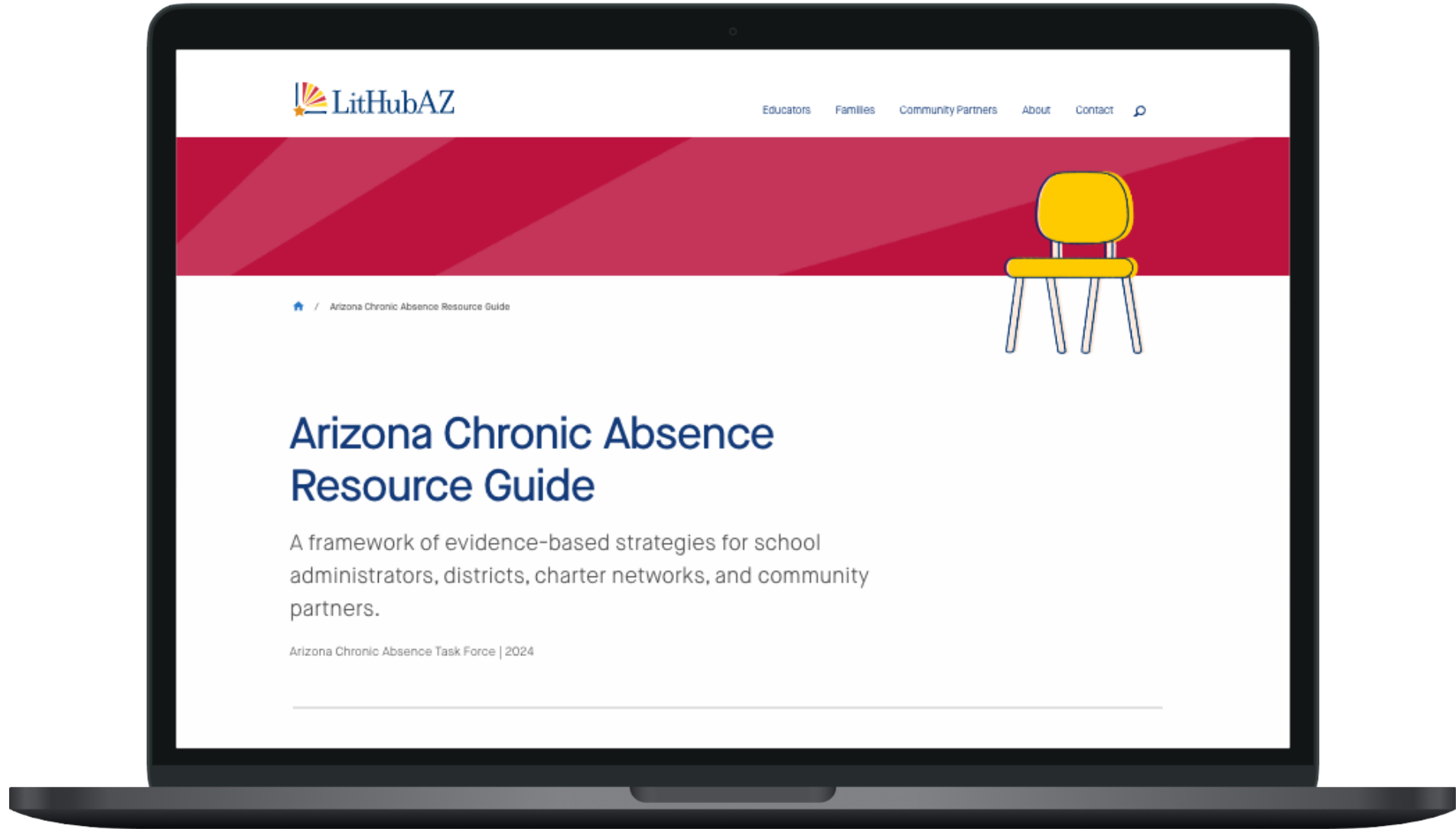
**Move On
When Reading**



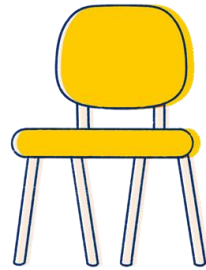
**Dyslexia
Resource Guide**



Smart Talk



Arizona Chronic Absence Resource Guide



- Causes & Challenges
- Using Data
- Multi-Tiered System of Support
- Effective Strategies and Interventions
- Arizona Spotlights

Exploring Options: Tiered Strategies That Work

TIER 2

Targeted Support Strategies for Students at Greater Risk of Chronic Absence

Tier 2 interventions target students who are close to (7%-9% missed) or already missing 10% of the school year. Tier 2 interventions can be offered to individual students or students in small groups with similar circumstances.

Personalized communication and outreach to students and families to address attendance



Individual student support



Early warning and intervention systems



Common community and school barriers to attendance identified and supports provided



Small group interventions for students with similar circumstances

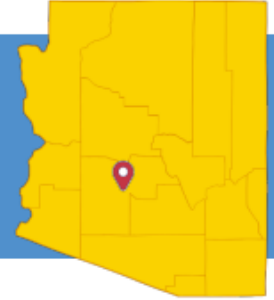


Arizona Spotlights



ARIZONA SPOTLIGHT

City of Phoenix Head Start



Before the school year even begins, City of Phoenix Head Start kicks off efforts to raise awareness around the importance of attendance. Teachers provide orientations for parents about the expectations of daily attendance and highlight the connection between attendance, school readiness, and the achievement gap. Families are educated and engaged throughout the year.

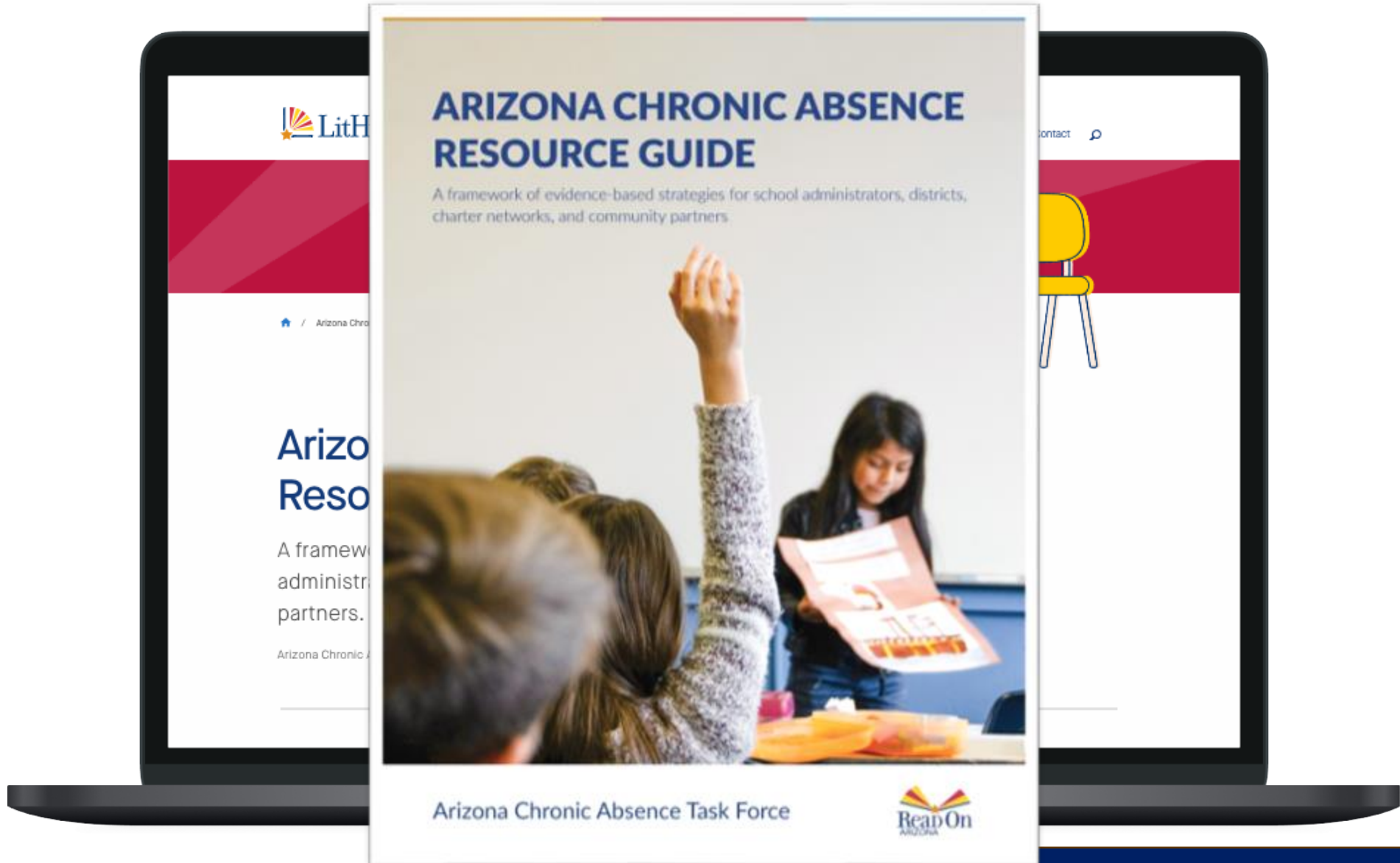
“ We know that starting the attendance habit in the birth to five years will set children up for success later in school.

- Katie Perez, City of Phoenix Head Start

During the first 20 days of school, staff review data to identify children who are chronically absent and intervene early. Data is pulled daily to identify levels of absence. Teachers and caseworkers work with families and use resources from Attendance Works to create an individual success plan to address barriers to attendance and effectively address the problem. City of Phoenix Head Start has seen its chronic absence rate drop by 20% over the past two years.



[Read the full story in our online guide](#)



LitHubAZ.org





Thank you.

Lori Masseur
Director of Early Learning
lmasseur@readonarizona.org